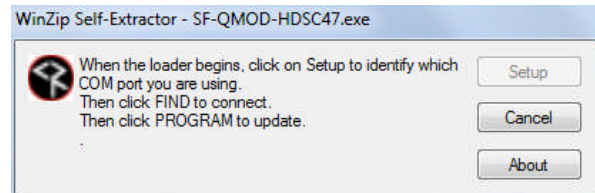
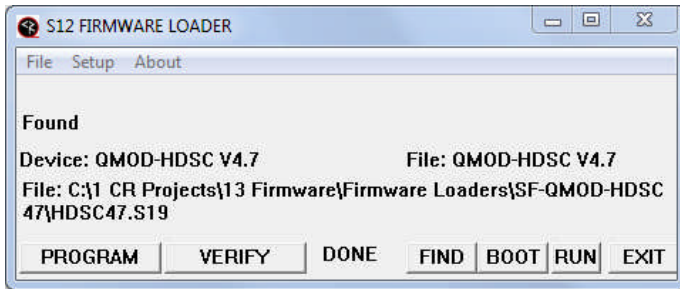


S12 Firmware Loader - QMOD

RS-232 Tool for CR Control Firmware



Contemporary Research QMOD HDTV Modulators feature our advanced S12 processor that allows in-the-field firmware updates using a Windows PC, a COM or USB-RS-232 adapter, and an RS-232 null modem cable (DB7 Female to Female, TX and RX swapped at one end).

The firmware download process works simply and easily:

- Download the desired firmware self-extracting EXE file at www.crwww.com/downloads.
- Connect the QMOD-HDTV unit to an RS-232 port with a null modem cable and note which RS-232 port you are using. Some USB adapters will show 2 COM ports, try FIND with each to discover which is the real port.
- Make sure programs such as HotSync aren't already using the RS-232 port
- Run the SF-QMODxxx.EXE updater program, then click SETUP to select COM port. Sometimes the app will say NO COM PORT after you select the port, but go ahead and click **FIND**.
- When the program FINDS the QMOD, you'll see the name of the product after **Device:** and the firmware file you are loading after **File Name:**.
- If the loader app cannot find the QMOD, the culprit is usually the cable – what looks like a null modem cable sometimes is not, and some USB adapter software may not be installed correctly.
- Normally, the desired firmware file is already loaded – you can use **File/Open** if you have several firmware files stored in your PC
- Click the **PROGRAM** button to start the loading process. You may see several messages while the program tests the COM port baud rate - You'll see a **RUN** message the reboots the unit. You'll see the unit's name and firmware versions after reboot.
- The VERIFY, BOOT, RUN buttons are manual operations that the loader and **PROGRAM** performs automatically - you'll rarely use them unless asked by CR Tech Support.

Check the front panel of the QMOD if you are having problems loading the firmware. If the upper right corner flashes an X or other letter, the status information the unit is sending back interferes with the loading process. Or you may have had other problems that affected the update. Try this:

- Unplug power from the QMOD
- Hold down the Up and Down buttons while you plug power back in
- Release the buttons
- The LCD screen will be blank, essentially in standby for loading
- Press **Program** to start the firmware update.