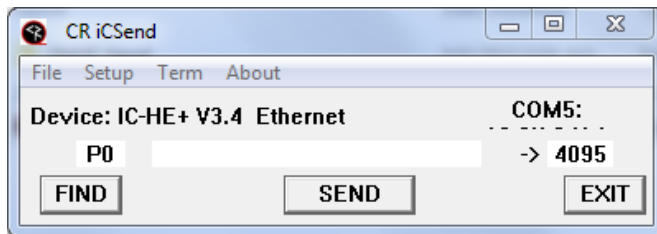


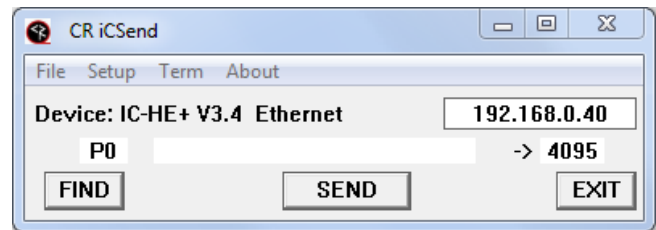
IC Send

RS-232 Tool for ICC-HE and ICE-HE Head Ends

Ver. 2.12



Com Setting



IP Setting

IC Send is a Windows application for testing iC-Net communication and control. Setup just takes a few steps:

- Click **Setup** to choose RS-232 port or IP port.
 - For IP control, enter the quad address of the ICE-HE and click Find.
 - IC Send will show the ICE-HE and firmware version
- For RS-232 control, connect a Female to Female null model cable (TX and RX swapped at one end) between a PC and a CR iC-Net Head End. **Connect the cable to the Remote Control Port, not the iC-Net port.**
 - Check to make sure the DIP switches on the front of the Head End is set to 19.2 Kb. Switch 6 set to Off, Switches 7 and 8 On.
 - Launch iC Send – no installation is needed.
 - For IP Port, enter the IP address of the Head End.
 - Click **FIND** to connect to the IC Head End, then IC Send will display "Seeking Device".
 - If IC-Send connects to the Head End, the firmware version of the HE will appear at the top left below the menus.
 - If you change the cable or DIP switch settings on the HE, click **FIND** to re-connect.

Entering Commands

- **Command:** Enter the command code in the first field.
- **Parameter:** Enter the parameter, if needed, in the second
- **Device:** Enter the device or Zone number for the controller(s)

Click **SEND** to send the command.

Devices and Zones

To send a command to an individual controller, enter its unique address. To send a command to an entire Zone (up to 255 controllers) or all controllers, enter the address below.

Zone	Address	Zone	Address
All	4095	8	2048
1	256	9	2304
2	512	10	2560
3	768	11	2816
4	1024	12	3072
5	1280	13	3328
6	1536	14	3584
7	1792	15	3840

Typical Commands

Command	Description	
All Controllers		
Power Off	P0	P (Zero)
Power On	P1	P (One)
Tune Analog	TC	2-127
Tuning Format	S0	0=CATV 1=Off-Air 2=IRC 3=HRC 4=Auto
Volume	VL	Sets TV volume level 0 = Mute 1 – 63 = Minimum level (1) to maximum volume (63)
RS-232		ICC1-232, ICC2-ATSC, ICC2-VDC
RS-232 Control	T0	Selects control make and model for RS-232 control. Check Manual or www.crwww.com product Install page for codes
Tuning Style ICC1-232	H1	1 = 5-digit CableCard style tuning (1-9999) 2 = Virtual HD Major-Minor tuning (tunes to virtual channel ID in display) 3 = Physical HD Major-Minor tuning (physical channel, minor digital)
HD Tuning	TH	<Major>,<Minor> Example: TH then 15,1 tunes channel 15-1
Direct	UX	Sends an RS-232 command directly to a display or projector through the controller's RS-232 port. Example: UX 'mc 00 39',13 [Device #] sends a toggling Captions On/Off command to an LG display. ASCII character strings can be denoted by enclosing in single quotes (or double quotes if you actually needed the single quote character in the string). Hex bytes are denoted with a \$ symbol. Decimal characters are without quotes.
Scan		ICC2-ATSC
Scan Mode	D0	Sets scan mode for digital and analog channels from the T^ or front panel scan command. 0= Scans for analog and digital channels scan (default) 1= Scans for digital only, deletes analog channels 2= Scans for digital only, keeps analog channels 3= Scans for analog only, deletes digital channels 4= Scans for analog only, keeps digital channels
Channel Scan	T^	Initiates channel scan
IR		ICC1-IR, ICC2-IRC
IR Code	T1,	Sets IR control code. Check Manual or www.crwww.com product Install page for codes

Terminal

There is a pop-up Terminal window in development, will be fully functional in a future update.